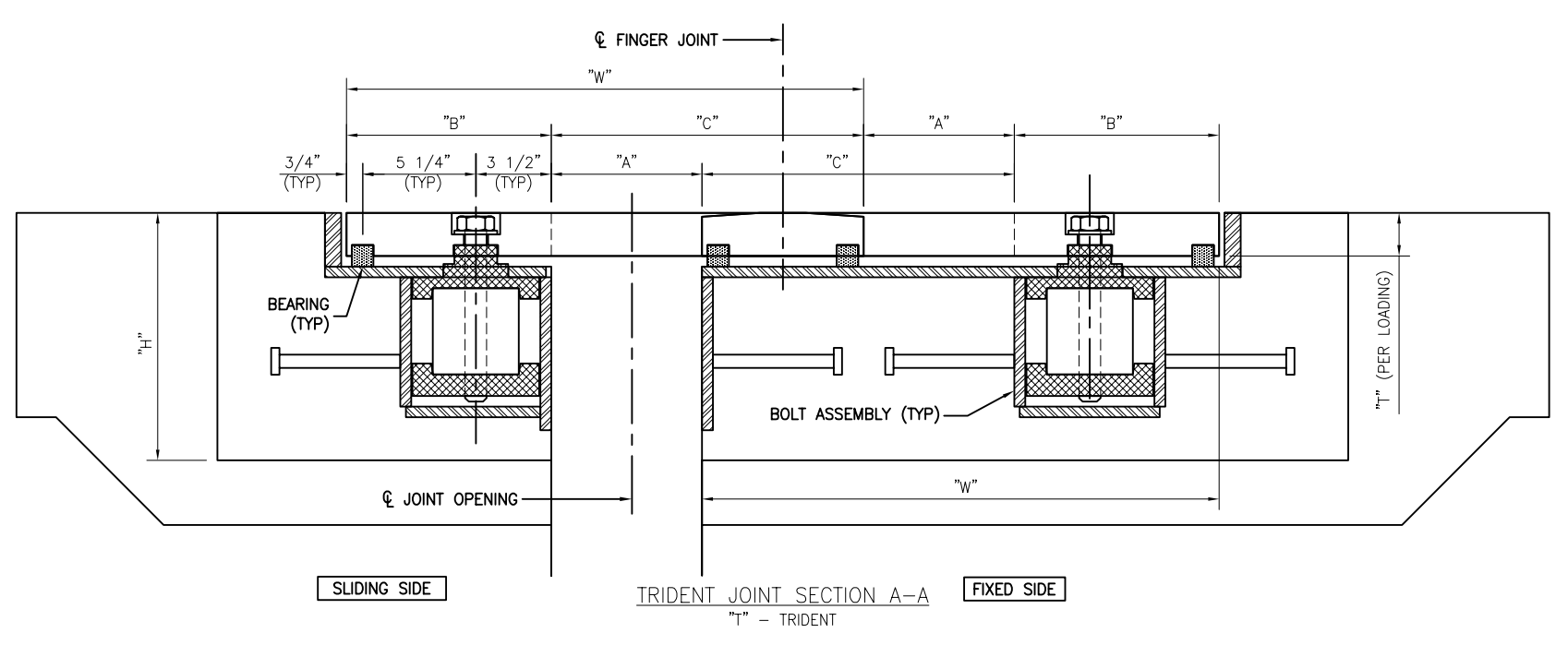
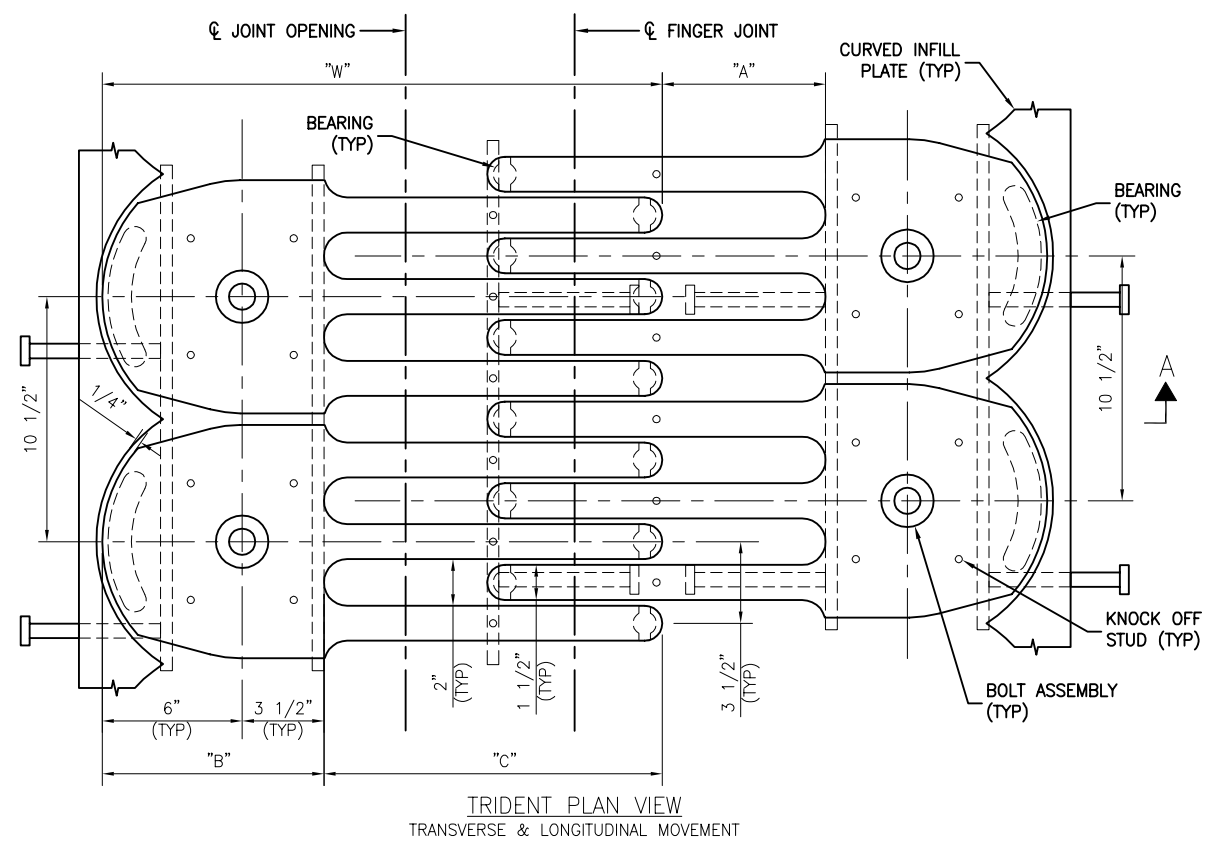


16 15 14 13 12 11 10 9 8 7 6 5 4 3 2 1

H
G
F
E
D
C
B
A



FINGER JOINT SIZE	MOVEMENT	JOINT OPENING "A"			BOLT LANDING LENGTH "B"	FINGER LENGTH "C"	BLOCKOUT DEPTH "H"	PLATE WIDTH "W"	PLATE THICKNESS "T"
		MIN.	MID.	MAX.					
600T	6	1	4	7	9.5	8.5	11.5	18	2
900T	9	1	5.5	10	9.5	11.5	11.5	21	2
1200T	12	1	7	13	9.5	14.5	11.5	24	2
1400T	14	1	8	15	9.5	16.5	11.5	26	2
1600T	16	1	9	17	9.5	18.5	11.5	28	2
1800T	18	1	10	19	9.5	20.5	11.625	30	2.125
2000T	20	1	11	21	9.5	22.5	11.75	32	2.25
2200T	22	1	12	23	9.5	24.5	11.75	34	2.25
2400T	24	1	13	25	9.5	26.5	11.875	36	2.375

NOTES:
 Materials to be ASTM A709, A588, or A36. Alternate Materials available upon request
 Corrosion protection to be Hot Dipped Galvanized, Alternate Coating available upon request
 Above drawing is only a generic representation and full application shop drawings once order is received

DRAWING ACTION:	TOLERANCES (UNLESS OTHERWISE SPECIFIED) ALL DIMENSIONS ARE IN INCHES
	DECIMAL: X ±.030 .XX ±.015 .XXX ± .010
DATE X/XX/XX	FRACTION:
	OVERALL LGTH: -0 +1/8" ANGULAR: ±2° (FAB) / ±1° (FORM) LINEAR (DTLS): ±1/16 HOLE SIZE/DEPTH: +1/16 -0 SWEEP/CAMBER: ASTM A6 T21 STUD LOCATION: ±1 HOLE LOCATION: ±1/2 BUTT SPLICE LOCATION: ±1/2 WELD LOCATIONS PER APPLICABLE CODE/SPEC



Watson Bowman Acme Corp.
 95 Pineview Drive Amherst, NY 14228
 phone: (716) 691-7566 fax: (716) 691-9239
 www.wbacorp.com



NO.	DESCRIPTION	NAME	DATE	DETAILED BY:	DATE:
				CTM	02/09/22
PROJECT:	WABO@Trident Finger Joint Sales Proposal Drawing	SCALE:	SHEET NO.:	CHECKED BY:	DATE:
				JW	XX/XX/XX
4 of 4	SP-FIN 04	WBA JOB NO.:	REV.:		
		FINGER	0		

16 15 14 13 12 11 10 9 8 7 6 5 4 3 2 1