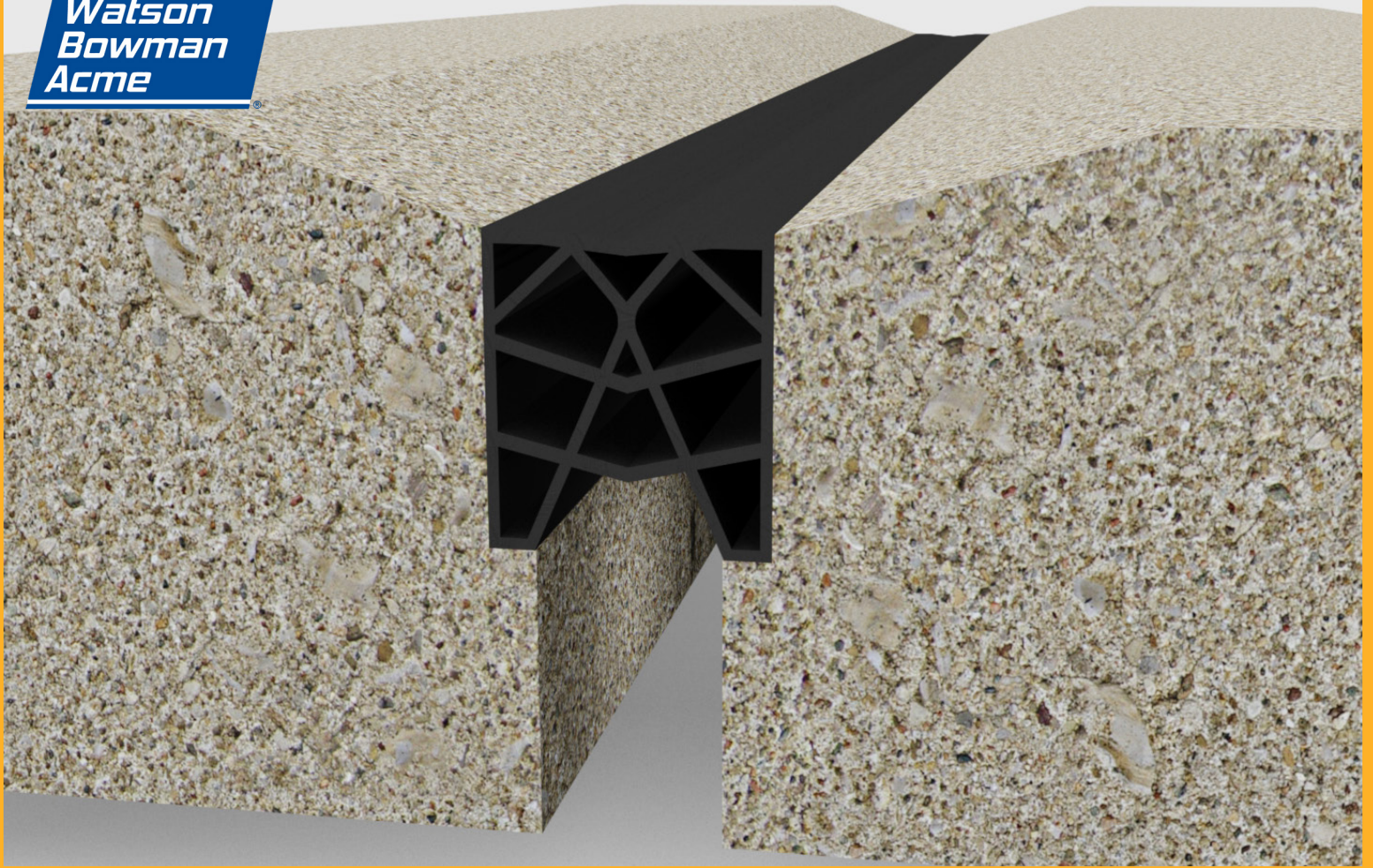


**Watson
Bowman
Acme**



Wabo® CompressionSeal

PREFORMED ELASTIC JOINT SEAL

- Resistant to deterioration from weather and impact
- 30+ years history of successful installations
- Cost-effective
- Conforms to various configurations

BUILDING TRUST



Wabo® CompressionSeal

PREFORMED ELASTIC JOINT SEAL

DESCRIPTION

Wabo®CompressionSeal bridge series is a preformed elastic joint seal manufactured of neoprene and installed with a lubricant adhesive. It is highly resistant to deterioration from exposure to weather, sunlight, oils and impact. When properly installed, the Wabo®CompressionSeal bridge series provides a permanent seal

APPLICATIONS

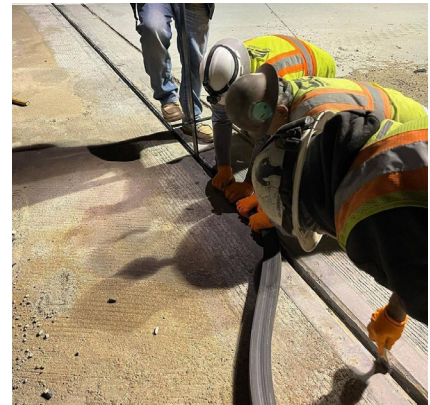
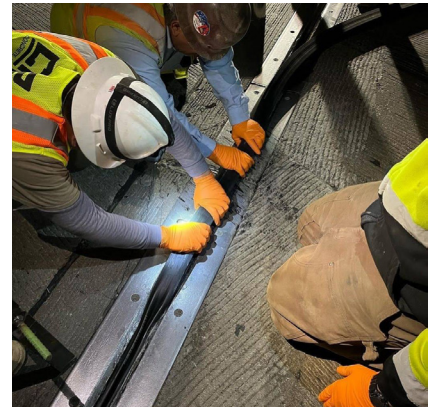
- Sealing expansion joints on bridges and highways
- Heavy duty traffic and high-load applications
- On-call maintenance and rehabilitation

FEATURES/ BENEFITS

- Proven track record of successful installations with over 30 year history
- Sold with Wabo®PrimaLub lubricant for ease of installation
- Versatile by conforming to various structural configurations
- Unique design provides uniform compression to prevent seal from being forced out of joint opening

PHYSICAL PROPERTIES

Physical Property	ASTM Test Method	Requirements
Tensile Strength, min	D 412	2,000 psi (13.8 Mpa)
Elongation at Break, min	D 412	250%
Hardness, Shore A	D 2240	55 +/-5
Oven Aging, 70 hrs. @ Tensile, max loss Elongation, max loss Change in hardness	D 573	20% 20% 0 to 10 pts
Oil Swell, 70 hrs. @212°F (100°C) Weight Change, max	D 471	45%
Ozone Resistance 70 hrs. @ 104°C (40°F)	D 1149	no cracks
Low Temperature Recovery 72 hrs. 14°F, min 22 hrs. -20°F, min 70 hrs. 212°F, min	Section 7d	88% 83% 85%



FOR MORE INFORMATION:

Contact Sika: Phone 800.933.SIKA(7452) Website: usa.sika.com

Sika Corporation
201 Polito Avenue
Lyndhurst, NJ 07071
Phone: 201-933-8800
Fax: 201-933-6225

Watson Bowman Acme
95 Pineview Dr.
Amherst, NY 14228
Phone: 716-691-7566
Fax: 716-691-9239



BUILDING TRUST

