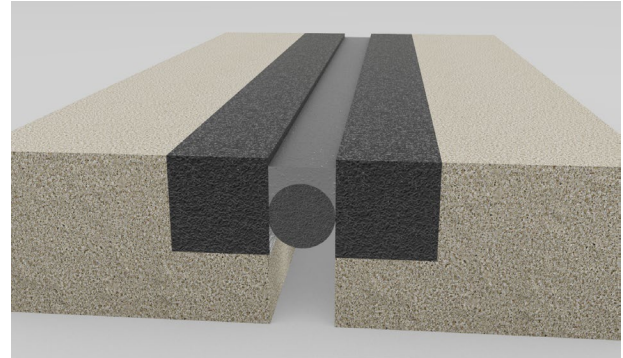


Wabo® SiliconeSeal

Two Part Silicone Joint Seal
(Licensed for use under US Patent No. 5.190.395)

Features	Benefits
<ul style="list-style-type: none"> • Unique Design 	<p>Designed to provide a watertight seal and minimize debris, the seal will easily bond to itself. No priming of interfaces is required, which simplifies and accelerates the installation process</p>
<ul style="list-style-type: none"> • Rapid Installation 	<p>A two-part cold applied, self-leveling, ambient cure sealant assuring ease of installation and providing minimal downtime in the field.</p>
<ul style="list-style-type: none"> • Versatility 	<p>Suitable for concrete, or elastomeric concrete header applications and other headers, while allowing multidirectional movements of the structure.</p>



RECOMMENDED FOR:

- Sealing horizontal joints on bridges and other civil structures
- Expansion joint applications with a maximum movement range of +100% to -50% of the joint opening.
- Structures where minimum construction closure time is a factor.
- New construction or repair and maintenance of existing joints.
- Simple installation allows for quick and easy repairs for maintenance crews.

PACKAGING/COVERAGE:

- Wabo®SiliconeSeal is a 1:1 mix and available in:
 - Standard 50.72 oz dual cartridge kit (Part A – 25.36oz; Part B – 25.36oz)
 - 10 gal unit (Part A – 5 gal; Part B – 5 gal)
- Yield will depend on joint design, tooling, backer rod placement, waste, CSP2 profile and experience. See estimated Yield Chart below.

DESCRIPTION:

Wabo®SiliconeSeal is a high-performance two-part sealant designed for horizontal expansion joints on bridges and other civil structures. The cold applied, self-leveling, low modulus sealant is ideally suited for the new construction or repair of existing expansion joints. When dispensed through the proper static mixing tip, the sealant cures rapidly to form a well bonded elastomeric joint seal capable of accommodating movements + 100% /- 50% of the joint opening. Wabo®SiliconeSeal does not require the use of primers.

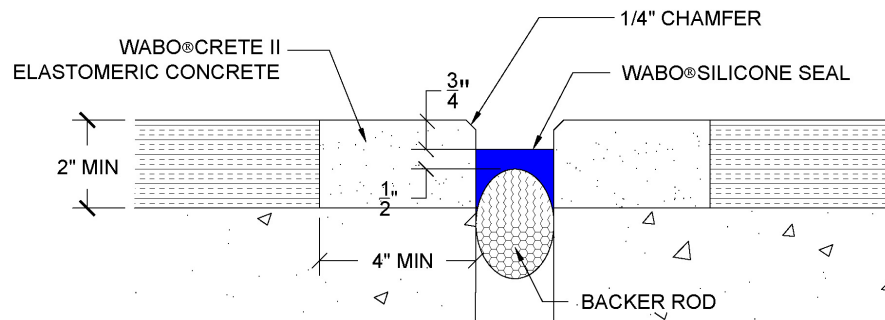
JOINT WIDTH	YIELD/KIT (10 Gal Unit)	YIELD/UNIT (50.72 oz Cartridge)
1" (25mm)	317 LF (96.6m)	12.6 LF (3.8m)
1.5" (38mm)	194 LF (59.1m)	7.8 LF (2.4m)
2" (50mm)	135 LF (41.1m)	5.3 LF (1.6m)
2.5" (64mm)	100 LF (30.5m)	3.9 LF (1.2m)
3" (76mm)	78 LF (23.8m)	3.0 LF (0.9m)

TECHNICAL DATA:

Design Information

Wabo®SiliconeSeal is capable of accommodating movement +100% to -50% of the joint opening at the time of installation. Polyethylene backer rod should be sized 25% greater to ensure proper joint configuration of the sealant and positioned 1 1/4" from top of riding surface. Regardless of opening, the sealant shall be 1/2" thick, not to exceed 5/8" in the center.

Wabo®SiliconeSeal is not recommended for joint openings that will exceed 3 1/4" during the movement cycle.



PHYSICAL PROPERTIES (Wabo®SiliconeSeal):

PHYSICAL PROPERTIES	ASTM TEST METHOD	PART A	PART B
Color		White	Gray
Viscosity		88,000 cps	34,000 cps
Leveling	C 639	self levels	self levels
Extrusion rate ml/min.	C 1183	200-600	200-600

PHYSICAL PROPERTIES	ASTM TEST METHOD	REQUIREMENTS
Leveling	C 639	self levels
Tack free time	C 679	60 minute max.
Joint elongation	D 5329 ⁽¹⁾⁽²⁾	600% min.
Joint Modulus, 100%	D 5329 ⁽¹⁾⁽²⁾	15 psi (.10MPa) max
Cure evaluation	D 5893	Pass @ 4 hrs, max
Ultimate Elongation	D 412 Die C ⁽¹⁾	1000% min.
Stress @ 150%	D 412 Die C ⁽¹⁾	25 psi max. (.17 Mpa)
Shore Hardness, 00	C 661 ⁽¹⁾	40 - 80
Specific Gravity	D 792 ⁽¹⁾	1.20 - 1.40

(1) Specimens cured at 77 +/-3 F and 50 +/-5% R.H. For 7 days
 (2) Specimens size is 1/2" wide x 1/2" deep x 2" long.

APPLICATION:

- **Urethane (i.e. WaboCrete[®] II), Epoxy (i.e. Wabo[®]SurfaceMend) and Polyester (i.e. Sika Pronto 500) Header:** Header must be fully cured prior to installation. Grind or blast joint opening to remove high-gloss finish.
- **Newly placed concrete:** joint interface must be dry and clean (free of dirt, coatings, grease, oil, and other contaminants). Must be sound, durable and properly prepared to a CSP2 profile. New concrete must be cured (14 day minimum).
- **Aged concrete:** loose, contaminated, weak, spalled, deteriorated and/or delaminated concrete must be removed to sound concrete and prepared to a CSP2 profile prior to placement.
- **Steel:** If using steel, contact Watson Bowman Acme for proper installation techniques.

INSTALLATION GUIDE:

- Repair any spalls, voids, or structural cracking at the joint interface.
- The joint opening must be prepared to a CSP2 profile to remove all laitance and contaminants which may cause bonding problems. The joint opening should be blown clean using oil and water-free compressed air (>90psi).
- A non-gassing closed-cell expanded polyethylene foam rod, approximately 25% larger in diameter than the joint opening is positioned 1 1/4" below the riding surface. Tape adjacent section utilizing duct tape. Care should be taken not to puncture backer rod. No modifications of backer rod.
- The Wabo[®]SiliconeSeal system shall be applied in one direction only to a thickness of 1/2" minimum, while not exceeding 5/8" and maintaining a 3/4" recess from the riding surface.
- If any air bubbles protrude during installation, be sure to pop them.
- Clean all excess material from the edges of the joint opening as soon as possible. DO NOT allow the silicone to cure before removing it.
- Wabo[®]SiliconeSeal will begin to cure and form a surface skin within 20 minutes of application. The seal will be ready to accept traffic generally within one hour after installation.
- Do NOT use for joint openings greater than 3 1/4".
- Do NOT use a tow-behind compressor for installation. Instead use a pancake compressor not to exceed 50 psi.
- Do NOT allow any of the components to freeze prior to installation. Store all components out of direct sunlight in a clean, dry location between 50°F and 90°F.
- Shelf life of chemical components is approximately 12 months.
- Do NOT install when surface temperatures are less than 40°F.
- Periodically inspect the applied material and repair localized areas as needed. Consult a Watson Bowman Acme representative for additional information.
- Make certain the most current version of the product data sheet is being used. Please consult the website (www.watsonbowmanacme.com)

OPTIONS/EQUIPMENT:

- Dual component pump (for 10 gal kit). Contact WBA for recommended manufacturer.
- Albion AT1500X Pneumatic Caulking Gun (for dual 50.72 oz cartridges) can be purchased from WBA.
- Static mixing tips can be purchased from Watson Bowman Acme to assure proper fit to cartridge. Note: material should be mixed using 1/2" dia. 18 element static mixer or greater. Must be purchased separately from silicone material.
- Closed cell polyethylene backer rod 25% greater than joint opening.

RELATED DOCUMENTS:

- Material Safety Data Sheets
- Wabo[®]SiliconeSeal Specification
- Wabo[®]SiliconeSeal Sales Drawings
- Wabo[®]SiliconeSeal Installation Procedure

LIMITED WARRANTY:

Watson Bowman Acme Corp. warrants that this product conforms to its current applicable specifications. WATSON BOWMAN ACME CORP. MAKES NO OTHER WARRANTY, EXPRESS OR IMPLIED, INCLUDING ANY WARRANTY OF MERCHANTABILITY OR WARRANTY OF FITNESS FOR A PARTICULAR PURPOSE. The sole and exclusive remedy of Purchaser for any claim concerning this product, including, but not limited to, claims alleging breach of warranty, negligence, strict liability or otherwise, is the replacement of product or refund of the purchase price, at the sole option of Watson Bowman Acme Corp. Any claims concerning this product shall be submitted in writing within one year of the delivery date of this product to Purchaser and any claims not presented within that period are waived by Purchaser. IN NO EVENT SHALL WATSON BOWMAN ACME CORP. BE LIABLE FOR ANY SPECIAL, INCIDENTAL, CONSEQUENTIAL (INCLUDES LOSS OF PROFITS) OR PUNITIVE DAMAGES. Other warranties may be available when the product is installed by a factory trained installer. Contact your local Watson Bowman Acme representative for details. The data expressed herein is true and accurate to the best of our knowledge at the time published; it is, however, subject to change without notice.

WaboSiliconeSeal_0524